

6 CLEAN WATER AND SANITATION



MISHKATM

SOLAR SMART E-TOILETS

Designed and Powered by



Why there is ever increasing need of Public Toilets?



MISHKA

SOLAR SMART E-TOILETS



**Ever
Increasing
Urban
Population:
590 million
by 2030
(India)**



**Pointing
towards the
need of
providing
Wayside
Toilets by
Authorities**

This leads to demand for self-maintaining E Toilets



MISHKA
SOLAR SMART E-TOILETS

1

Growing
Urban
Population
demands
provisioning
of -

2

One Public Toilet
per 2,500-3,000
persons

3

One Public Toilet
at every 300-500
meter on busy
streets

4

One Pub- lic
Toilet at every
750-1,000
meter in other
streets

INTRODUCING



Mishka is India's First Fully Solar Powered Smart Public E Toilet

Mishka is a gift of love for clean-smart-hygienic sanitation from the house of Grinity Intellect Private Limited

Mishka (patent pending) is a modular, pre-fabricated public toilet made of steel and is integrated with user-friendly electronic interfaces, to ensure cleanliness and hygiene to every user. Unmanned and automated. These toilets incorporate full-cycle approach in sustainable sanitation by integrating electrical, mechanical and web- mobile technologies. They control entry, usage, cleaning, and remote monitoring capabilities with multiple revenue options.



Features- Snapshot



Features	Advantage
Body built up of Cold Rolled Steel (CRS) with powder coating or stainless steel	Durable
Coin validator /Access control through switch	Unmanned solution for public sanitation with transparency
Pre Flush, Auto flush, Automatic platform cleaning	Auto Clean the toilet before and after usage
LED indications	Alert for user if the unit is free, occupied, water low etc. for carrying operation.
Voice Guidance	Helps the user to operate the toilet without manual assistance.
Display boards	Can place instructions in local language for the user to read and identify
In built water tank of 225 liter	High and Low water level can be monitored to ensure water availability.
Internet Connectivity	Monitoring of usage of data units, coin collection, water low indication etc. remotely
Ease of Installation	Unit can be assembled at site, Unit can be shifted to another location, in exceptional cases of road widening area development etc. with less reduction of investment cost.

1

Easy to install

Modular Setup- easy to install and dismantle

2

Consumes less water

Patent Pending Design Consumes almost 80% less water

3

Power efficient (Solar Powered carbon free)

Smart technology Automation results in higher efficiency and lowest electricity consumption

4

Enhanced cleanliness auto flushes & floor washing

Auto Flushes and Floor cleaning enables us to maintain high cleanliness standards and Hygiene

5

Unmanned operations

Fully Automatic and Solar powered means it can run unmanned for many years with almost no maintenance

Disclaimer: All the features will be customized as per client requirement.

OUR COMMITMENT



AWARENESS

- Mass awareness
- digital campaigns
- Foot fall analysis
- Online and offline campaigns
- usage and results management

- IOT based tech
- Real time Tracking
- Usage tracking
- Fully Automatic
- Indigenous Code
- AI Enabled

TECHNOLOGY

PRODUCT

SERVICE

- Preventive or Predictive maintenance
- Breakdown service
- Ev maintenance van- zero emissions and pollution



FUNCTIONING OF E-TOILET



eToilet has to be placed on a basic civil / metal construction base. The unit has an *Indian style closet*, health faucet, lights, status display & instruction boards, etc. as the case may be. Water tank of 225 litre capacity will be erected on top of the toilet unit. The tank will be connected to the three flushes (pre-flush/platform washing/ after use flush) in the unit.

There will be display light outside the toilet unit, which shows whether the unit is 'Occupied' indicating with Red light or 'Unoccupied' indicating with Green light. The user can enter by inserting coin in case of pay-per-use eToilet or press the switch for free access eToilet and close the door manually, similar to a conventional toilet.

Upon entering the toilet, indoor lights will be switched on automatically. Pre-flush system will wet the closet initially. Toilet flush can be activated using a manual flush cock provided inside the toilet. Even if the user forgets to flush after usage, the system will automatically flush after the exit. Exit from the unit is completely manual. An automatic floor cleaning mechanism is also provided through which, the floor will be cleaned automatically. The floor cleaning can be activated either through a push switch or it can be programmed to function after a specified usage.

The eToilet, though it has integrated several electronic technologies for its smooth operations, does not provide any complex electronic interface for the common man. The electronic systems are purely utilised for effective management of the eToilets.

Functioning of Mishka



1

Door opens on Coin drop / Button Push. Bolting from inside is manual

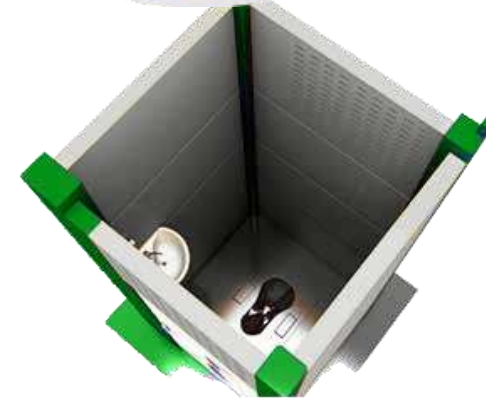
On entering inside lights operate automatically

2





MISHKA
SOLAR SMART Bio-TOILETS



**Lights & Fan Auto
On after Occupancy**

3

**Entry not allowed
when there is no
power or water**

4



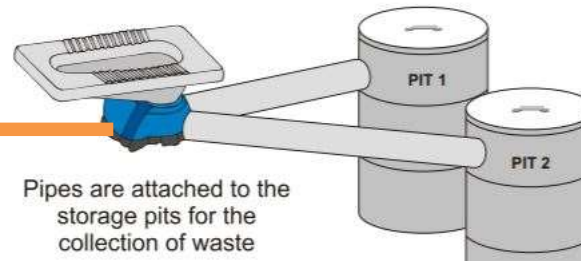
MISHKA
SOLAR SMART Bio-TOILETS

5

Auto flush after use
of toilet

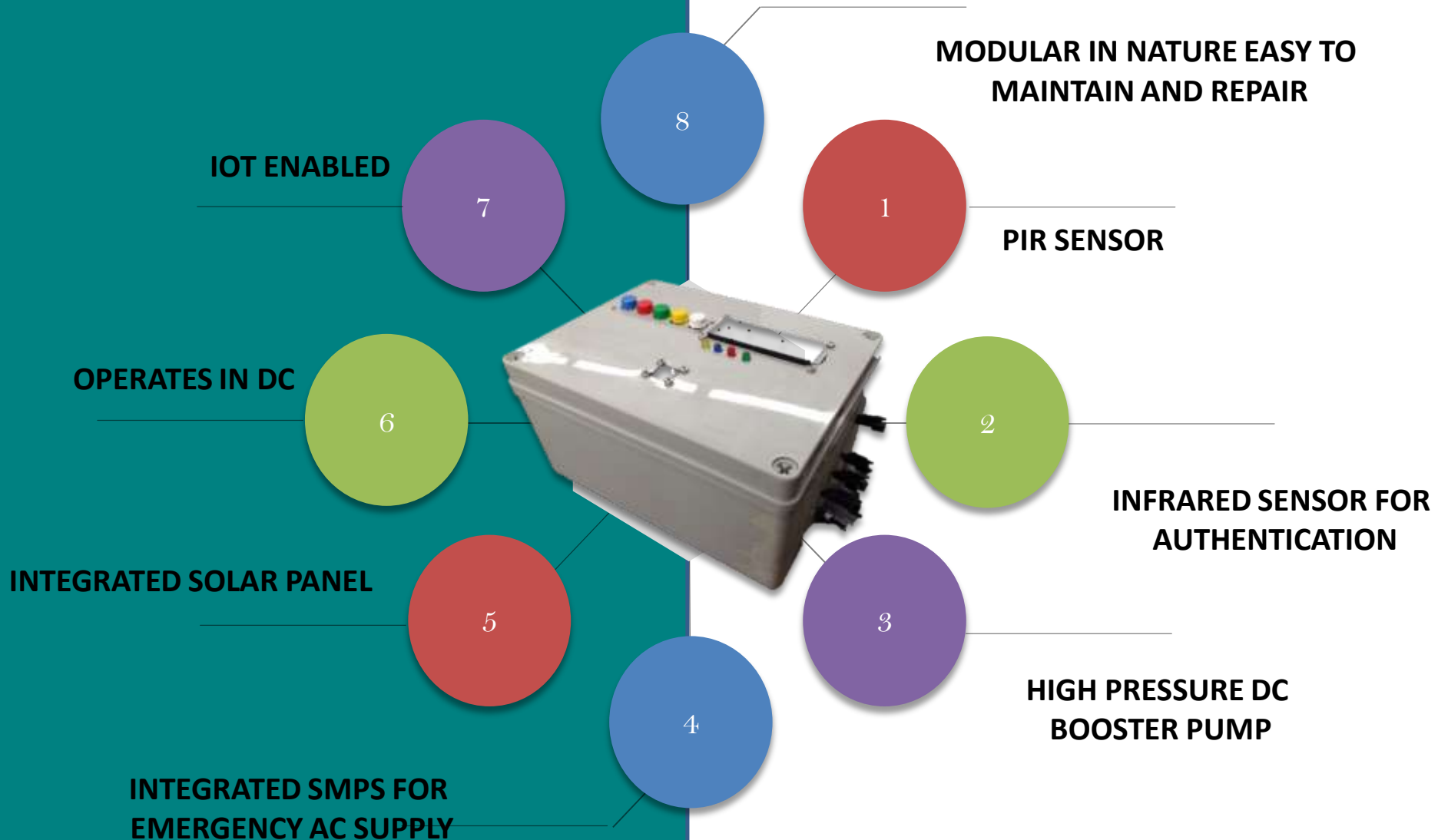
Auto Floor wash
after every 5 uses

6



Aerobic Digester

Grinity Automation Module





MISHKA- PREMIUM PRO

Introducing Mishka PREMIUM PRO E-toilet Range.

This is our premium range of e-toilets with A very beautiful inside cabin of stainless steel. Automatic power flush and walls and floor washing at scheduled interval, fully IOT Enabled with Modular Functionality easy to use and easier to maintain.



HEAVY DUTY

DIMENSION: 4 X 3 FEET
HEIGHT: 7 FEET
SS BODY: POLISHED
SS COMMODE
SS TAPS AND HANGERS



AUTOMATIC

ELECTRONIC CONTROLLED
AUTOFLUSH
AUTOMATIC FLOOR CLEAN
WATER SAVING TECH



COIN/RFID ENTRY

ELECTRONIC ENTRY BY RFID
OR COIN OR PUSH BUTTON
ENTRY WITH OCCUPANCY
SENSOR SIGN



SOLAR POWERED

FULLY AUTONOMOUS SOLAR
POWERED DC SYSTEM WITH
LI-ION OR TUBULAR BATTERY
SUPPORT-EMERGENCY AC
SMPS INCLUDED



MISHKA-AUTO PRO-1

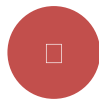
Introducing Mishka Auto Pro 1 E-toilet Range.

This Automatic E-toilet comes with all the bells and whistles, with automatic flush, occupancy detection, autonomous solar panel and LI-ion Battery pack. Heavy duty and Rugged.



SPECIFICATION

DIMENSION: 4 X 3 FEET
HEIGHT: 7 FEET
SS INSIDE /PERF TILES: 125MM
SANDWICH PANEL: 40MM
DOOR SIZE: 665 x 1790 X 40



AUTOMATIC

ELECTRONIC CONTROLLED
AUTOFLUSH
AUTOMATIC FLOOR CLEAN
WATER SAVING TECH



COIN/ RFID ENTRY

ELECTRONIC ENTRY BY RFID
OR COIN OR PUSH BUTTON
ENTRY WITH OCCUPANCY
SENSOR SIGN



SOLAR POWERED

FULLY AUTONOMOUS SOLAR
POWERED DC SYSTEM



MISHKA- SEMI AUTO PRO

Introducing Mishka SEMI AUTO PRO E-toilet Range. This E-TOILET is semi automatic and has automatic lights and fan on occupancy and features our automatic flush mechanism for a hands free process. These are basically installed in urban parks and airports and bus stations.



SPECIFICATION

DIMENSION: 4 X 3 FEET
HEIGHT: 7 FEET
ACP PANEL TOUGH BODY
INSULATION : SPRAY FOAM 40MM
SS STEEL/Ceramic- COMODE
Ceramic/SS Basin
Mirror
Hand wash facility
Automated Light and exhaust fan

SEMI-AUTOMATIC

ELECTRONIC CONTROLLED
AUTOFLUSH
AUTOMATIC LIGHTS AND FAN
WATER SAVING TECH

Manual Entry

Lever operated manual entry
and locking system

SOLAR POWERED

FULLY AUTONOMOUS SOLAR
POWERED DC



Write to Us



GRINITY INTELLECT PRIVATE LIMITED

Corporate Office

#687/2428, Jaydev vihar
Near Ekamra kanan park,
Bhubaneswar-751015

Call @ +91-7440009200/05

Landline no: 0674-255-0-555

Email us: info@grinity.in, Website: www.grinity.in

